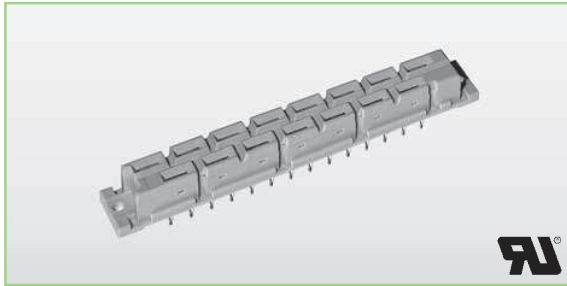


DIN 41612

2E Syscom Inc. - 86 Kendall Avenue - Framingham, MA 01720
 Tel. 508 620 1678 - www.2esyscom.com - e mail 2e@2esyscom.com

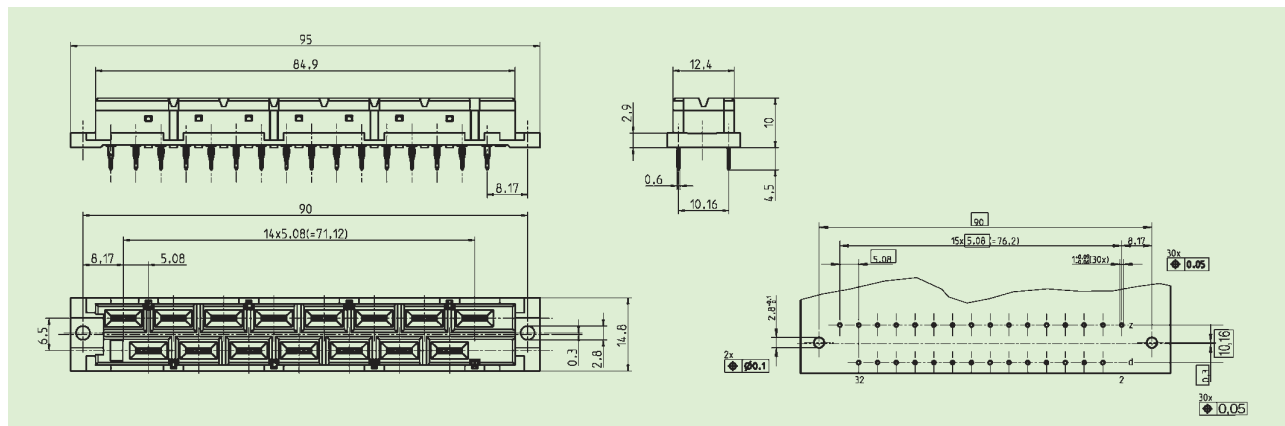
IEC 60603-2

H15



- Bauform H15 in Ergänzung an die DIN 41612
Type H15 in addition to DIN 41612
- Flexible Einpresszone, PbSn-Oberfläche
Flexible press-fit zones, PbSn-surface
- Isolierkörper aus PBT
Material of insulating body: PBT
- Mit integrierter Kodierung
With integrated coding device

Polzahl/no of contacts		15	
	Gütek./mating class		Zubehör/Accessories
Einpressanschluss (Doppelpin) <i>press-fit (double pin)</i>	 1 (Ag/Sn)	05 H15fdepAg/Sn8-co Order-No. 0589110	
Kodierkeile (grün) <i>coding key (green)</i>			05 H-cod Order-No. 0560115600C99



Technische Daten Seite 16 und 17.
 Technical specifications page 16 and 17.

